

Stair & Ladder Sensor Light Controller

—SL002A—

Manual

Product Description:

SL002A is a intelligent photoelectric beam infrared sensor. Depend on the principle of the interval between infrared lights from objects, when a person or an object enters sensing range in the middle of the sensor, the infrared lights between emitting and receiving will be separated, and the sensor will output signal through MCU processing immediately; When the person or object out of the sensing range, the sensor will cut down output. Form an on-and-off signal to intelligently control LED light switch or sound output.

Electric Performance:

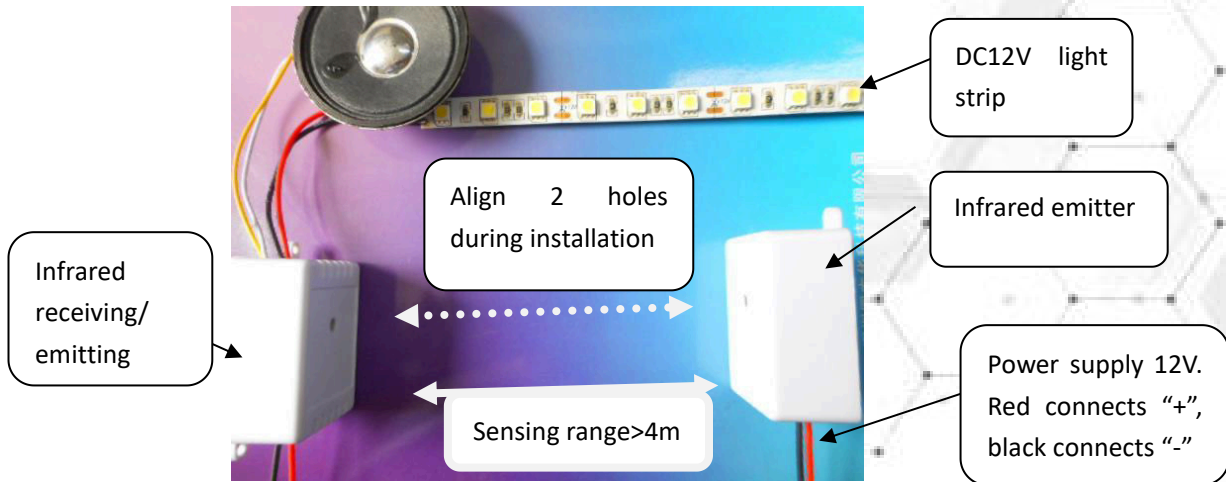
- 1.Input/output voltage: DC12V
- 2.Music output speaker: 4 Ω 2-3W
- 3.Effective sensing distance: >3M
- 4.Load power of the light: 40W
- 5.Sensing angle: $\pm 15^\circ$
- 6.Working voltage of single chip microcomputer: DC: 2-5V
- 7.Standby current: 0.1mA
- 8.Dimension: 50mm*35mm *22mm
- 9.Can be loaded with advertising lights, LED lights, bath lights, stair lights (this product is a pair of matching. Not include Power, light bar and speaker)

Scope of application:

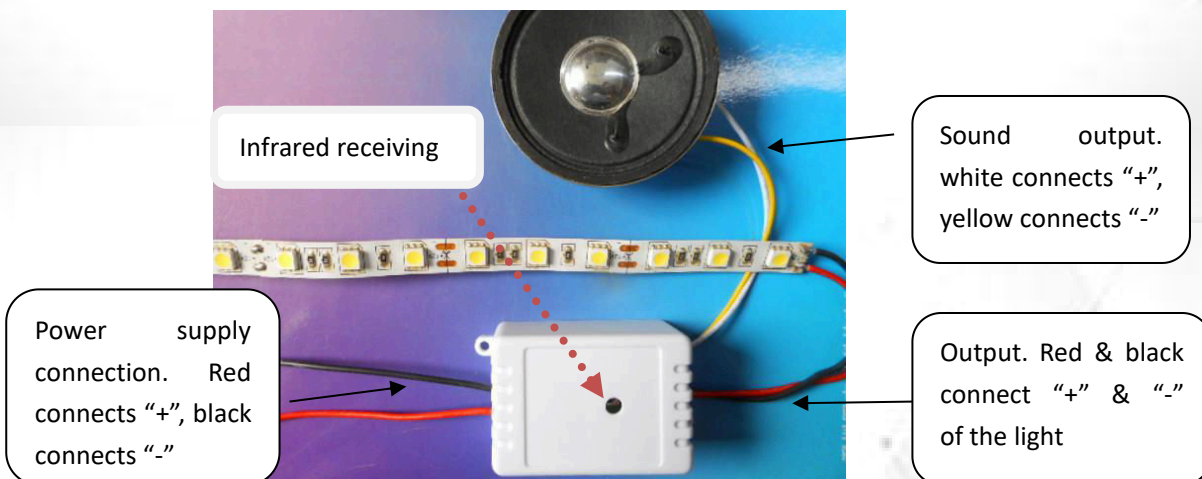
This product is designed with the principle of infrared radiation. It is suitable for controlling stair sensing, controlling machines and machine tools, advertising sensing lighting display, door control detection, etc. It is mainly used for public places such as shops, hotels, bars, KTV, shopping malls, etc.

Instruction:

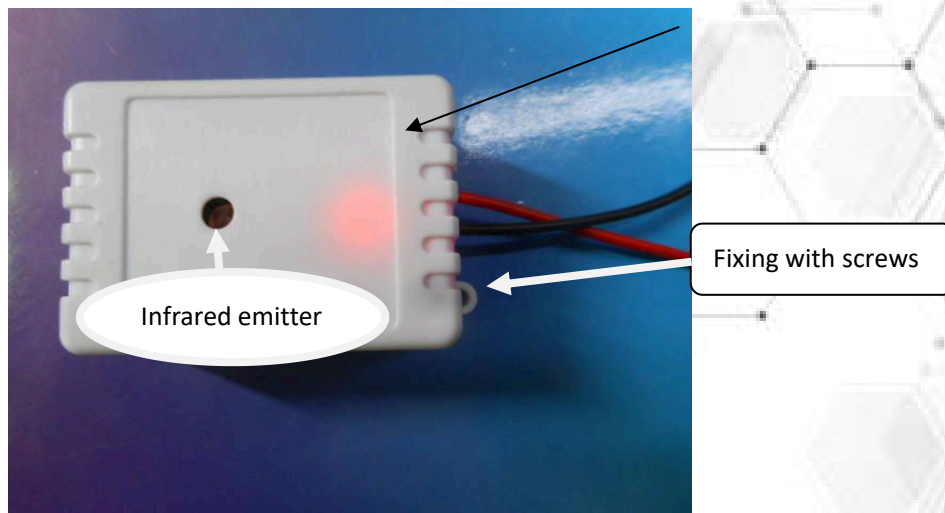
- 1、 Install the infrared emitter and receiver opposite and vertically. The receive tube must be aligned with the emit tube. Refer to the picture below.



- 2、 There will be a false alarm if it is not aligned or the distance is too far to be sensed. Use an object to block in the middle. If the sound and light is on, the device is aligned.



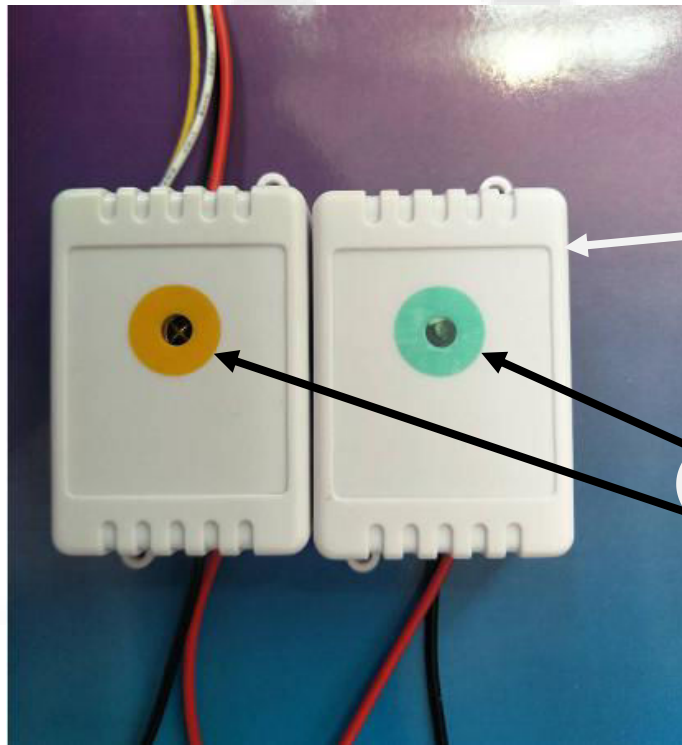
- 3、 Music output can be connected with external power amplifier circuit.



4、Place a receive plate and an emit plate on opposite sides of each stair.

5、The power supply can share a parallel connection (The power of the supply should be greater than the sum of all load power).

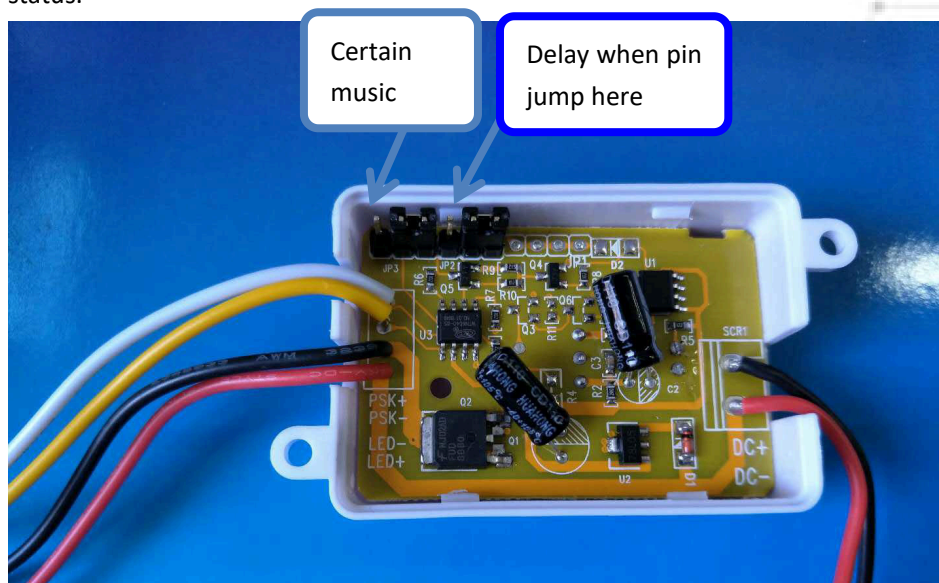
6、Short-circuit R12 and there will be a 5-second delay for the signal when the footstep leaves the ladder.

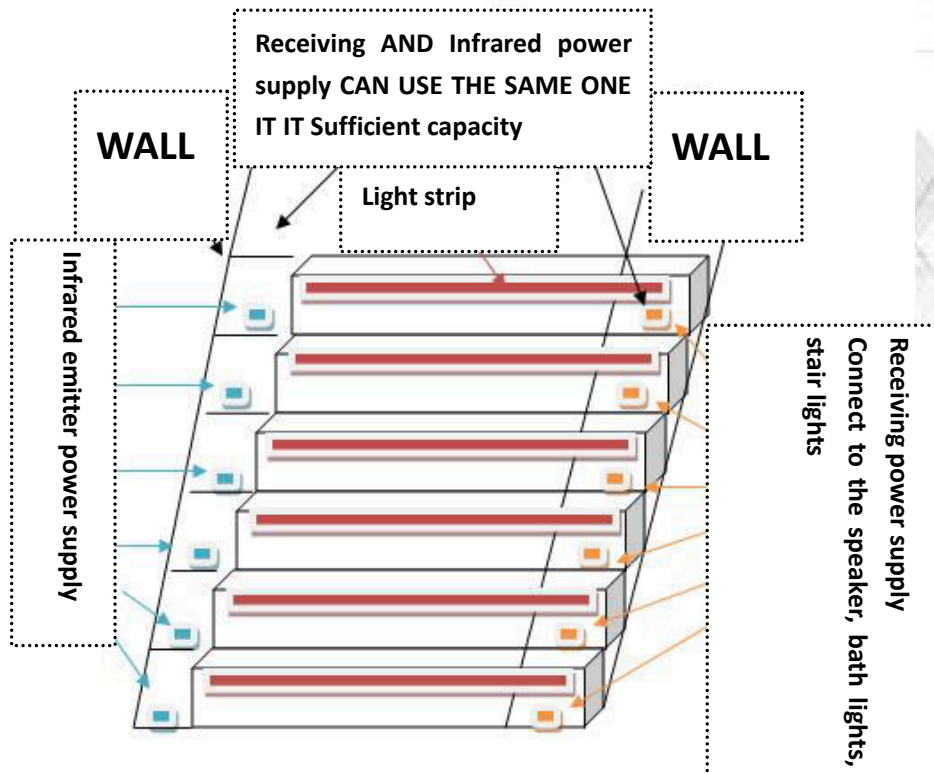


One pair for each stair

Infrared filter

Certain music is played with power on. Music switches once you block the sensor. Repeat till the music you like is played and short-circuit the bouncing pin. Cut off the power to return to original status.





楼梯台阶感应案例1



楼梯台阶感应案例2

Successful cases

7、 During installation, put a pair of emitter and receiver on each stair. Connect the wire of light strip and speaker power supply. Align, fix and install after regulation. Use lamination to mount the sensors on both sides of the wall after wiring. Save some space for sensing hole. For the beauty of the decoration, painting the wall is recommended.